

# THE COLLECTION EXPERIENCE

MALIBU- NORTH / LA, CALIFORNIA



© Rainer M.Berger. Dipl.-Ing., Architect/ Architect Armin Kind (110401-07)

**ACON alpha GmbH**

CH- 8607 AATHAL-SEEGRAEBEN/ ZH \* GIBELSTRASSE \* KUNST- WERK

e-mail: [ad2m@ad2m-concept.ch](mailto:ad2m@ad2m-concept.ch) \* [rainer.m.berger@bluewin.ch](mailto:rainer.m.berger@bluewin.ch) \* [acalpha@bluewin.ch](mailto:acalpha@bluewin.ch)

Homepage: [www.ad2m-concept.ch](http://www.ad2m-concept.ch)

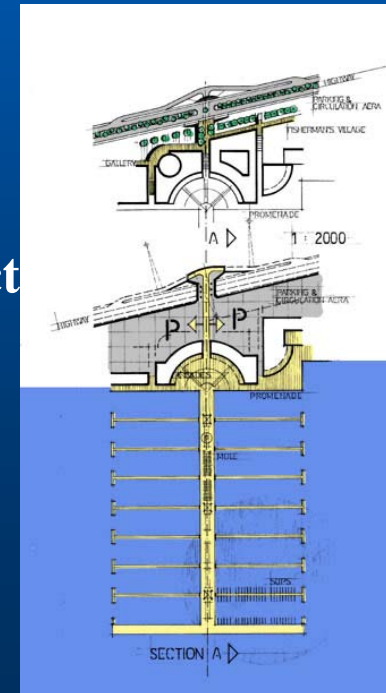
# THE COLLECTION EXPERIENCE

## MALIBU- NORTH / LA, CALIFORNIA

The Collection Experience Project Malibu-North is envisaged as a world-class public Marina, golf and destination resort; as a self-sustaining community to be set in more than 1,500 acres of land along the coastline —with over 1 mile of Ocean beachfront.

Proposed features include:

- a 1'500 to 3'000 boat-slip man made marina, protect by a new breakwater with all supporting facilities and a private Yacht Club



# THE COLLECTION EXPERIENCE

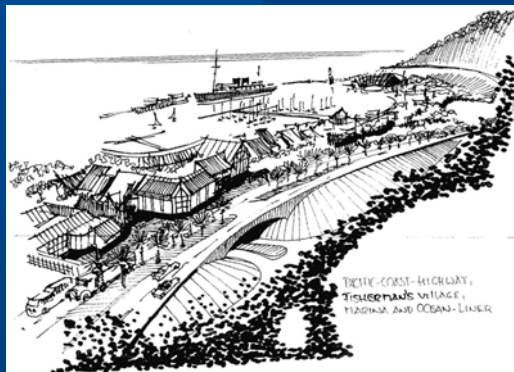
## MALIBU- NORTH / LA, CALIFORNIA



# THE COLLECTION EXPERIENCE

## MALIBU- NORTH / LA, CALIFORNIA

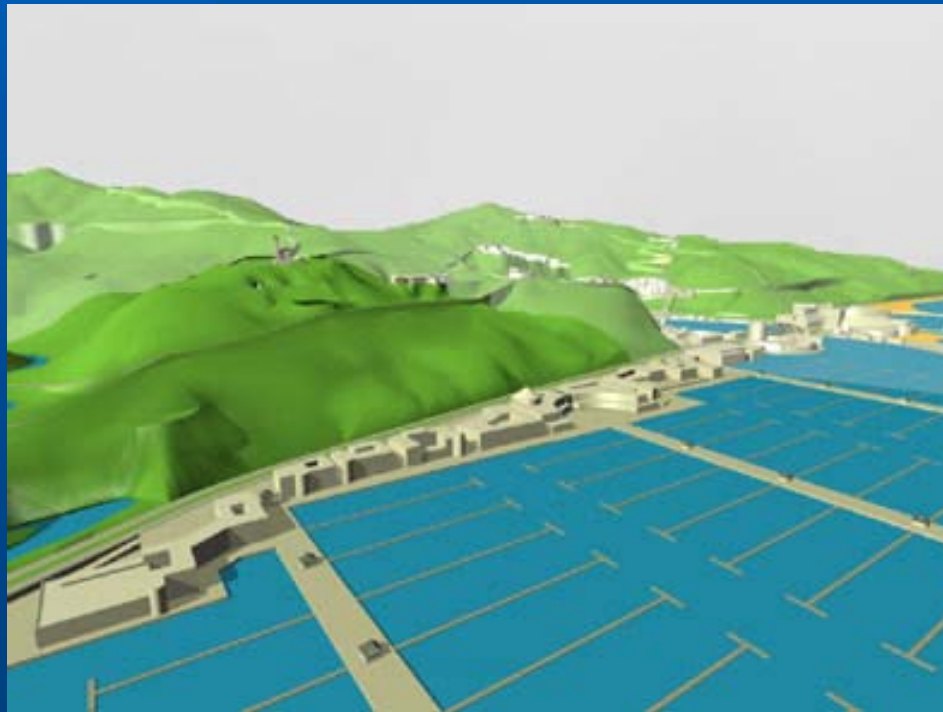
- Fisherman's Village Hospitality and Commercial Centre, with multifunctional Convention & Congress Center and Media-park



# THE COLLECTION EXPERIENCE

## MALIBU- NORTH / LA, CALIFORNIA

- a 3/4 mile long invigorating outdoor Waterfront Promenade and newly created sandy beaches

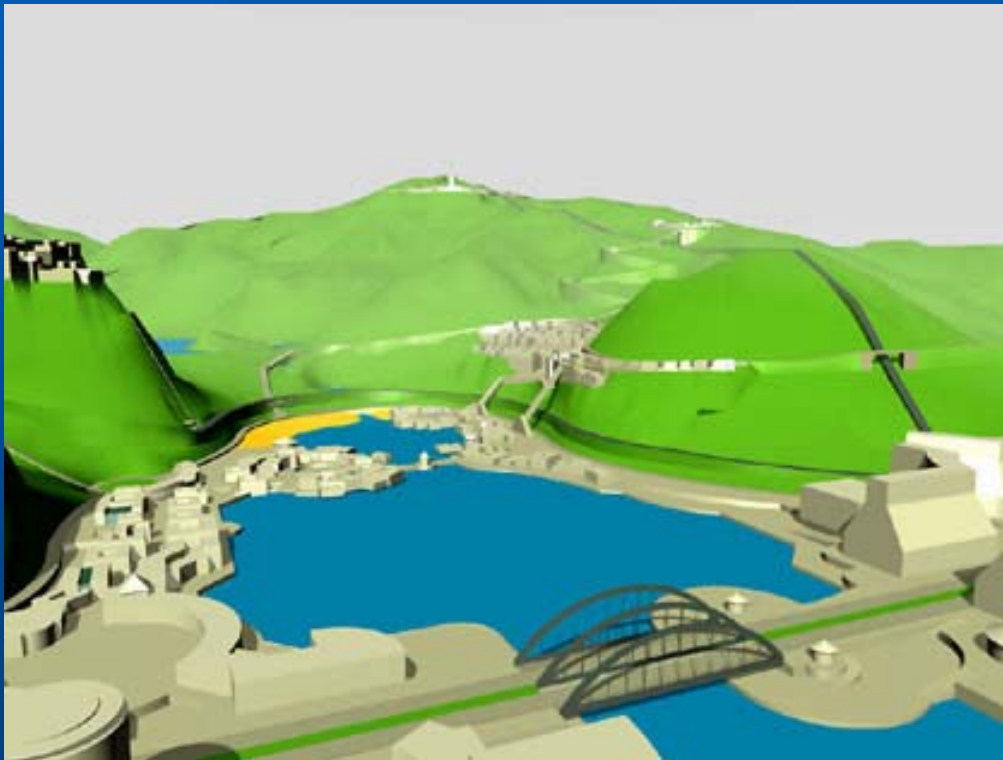




# THE COLLECTION EXPERIENCE

## MALIBU- NORTH / LA, CALIFORNIA

- a Lagoon village with Lagoon promenade, around a man-made onshore lagoon



# THE COLLECTION EXPERIENCE

## MALIBU- NORTH / LA, CALIFORNIA

- a Seaside Hotel & Resort Complex with newly created sandy beaches



# THE COLLECTION EXPERIENCE

## MALIBU- NORTH / LA, CALIFORNIA

- an Upland Hotel & Resort Complex Conference Center with lodgings and recreational amenities, 27 hole- championship golf course and Golf and Country club





# THE COLLECTION EXPERIENCE

## MALIBU- NORTH / LA, CALIFORNIA

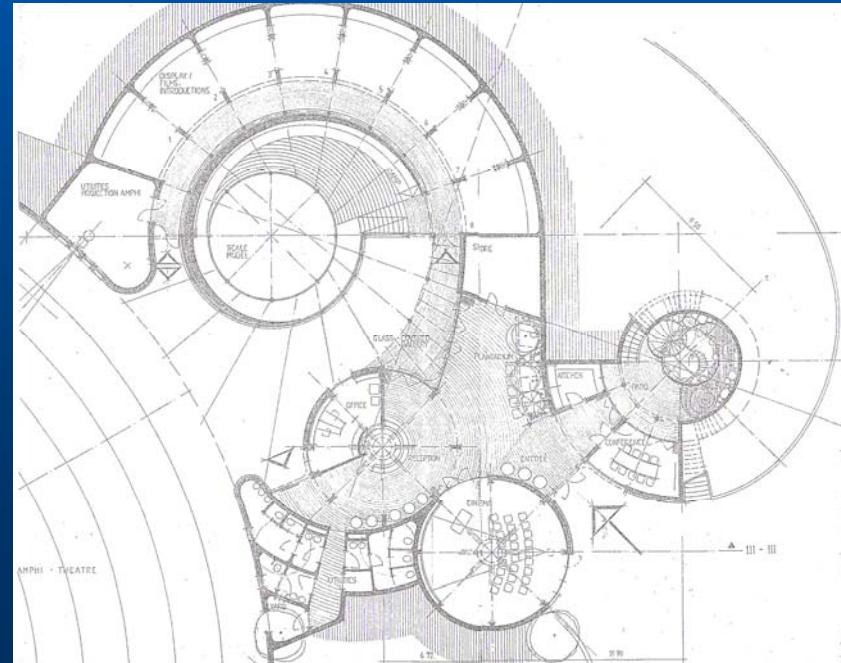
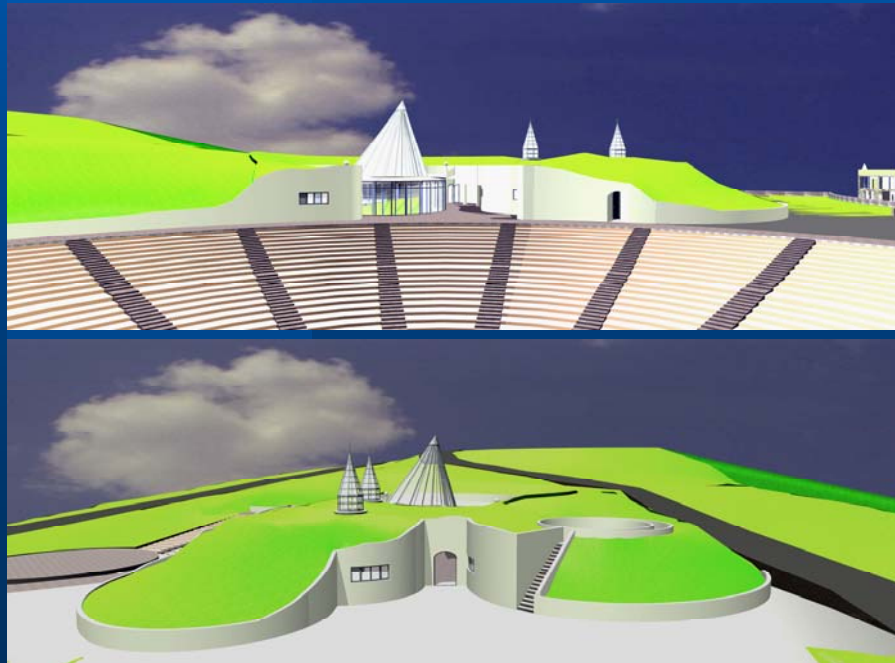
- inland villages with lakes, waterfalls, parks and cascades, Corporate Management Center, Castello di Paradiso and Hilltop Castle and a Museum



# THE COLLECTION EXPERIENCE

## MALIBU- NORTH / LA, CALIFORNIA

- a Visitors Center which will offer visitors a guided tour of the development and projects through film, computer animated information and displays (models), designed to help them discover the vision, personality and lifestyle “The Collection Experience” : the new community called Malibu-North.



# THE COLLECTION EXPERIENCE

## MALIBU- NORTH / LA, CALIFORNIA

### Visitors Center

The programme is as follows:

- \* Outside patio and gardens near the entrance and parking;
- \* Registration Counter/ Kiosk, close to the entrance (to keep visitors informed of the progress, and for the registration of the guests)
- \* Reception areas, restrooms
- \* Cinema and information space  
(for a brief audi/ visual introduction to The Collection Experience Malibu –North and from there, visitors can freely visit the site)
- \* A space providing information on our financial partners  
(displays with film(s), introducing all partners, the divers companies and organizations helping to make  
The Collection Experience Malibu-North technologically the most advanced and environmentally sensitive community)  
that will be shared with the financing partners (office and meeting room) and the organization and management staff  
of the project.
- \* A display space providing information on AMES and the sustainable designs of the project- presenting developments  
that are smart enough to preserve scarce resources for future generations,
- \* Display alternative transportation systems (getting around the community without using your car),
- \* Display Ecosystem (restoring und preserving vital natural habitants),
- \* Commercial, Retail & Office space (places to work, shop, relax and dining contained in the neighborhood)
- \* Display Education: kinder garden, library, university, college, school, ateliers etc.
- \* Connectivity everyone, and kids in particular, will be able to permanently acces high speed internet (always on and always  
up and running) built-in to every home and office.

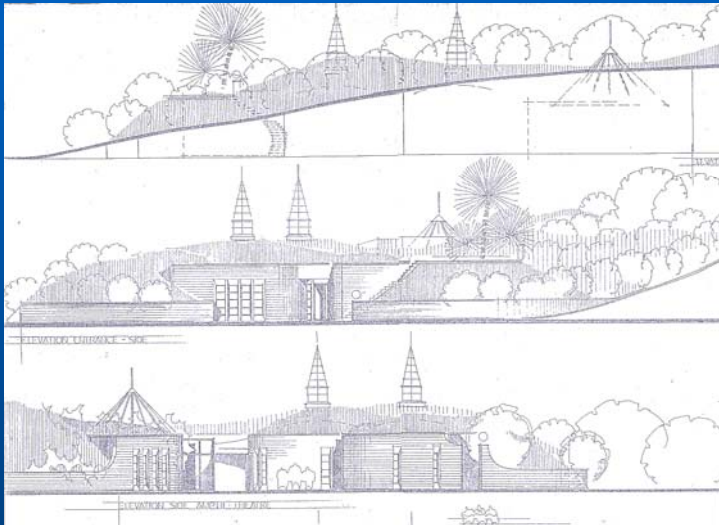




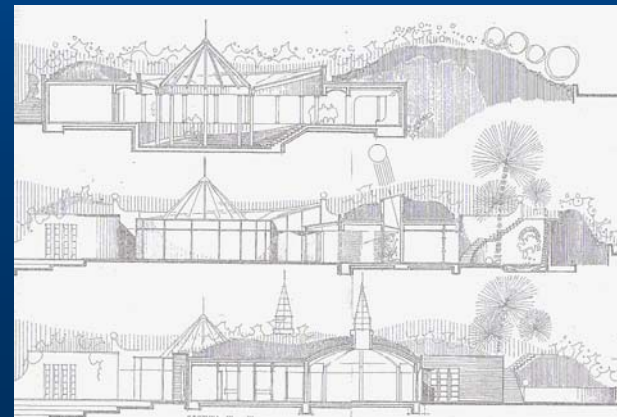
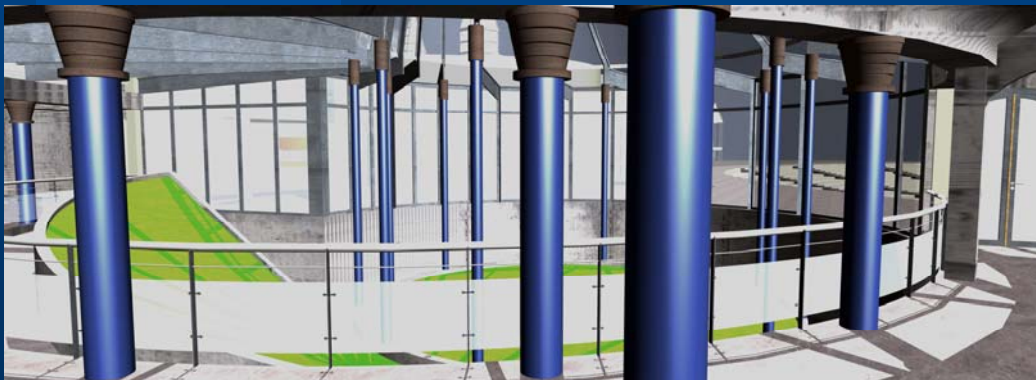
# THE COLLECTION EXPERIENCE

## MALIBU- NORTH / LA, CALIFORNIA

### Visitors Center



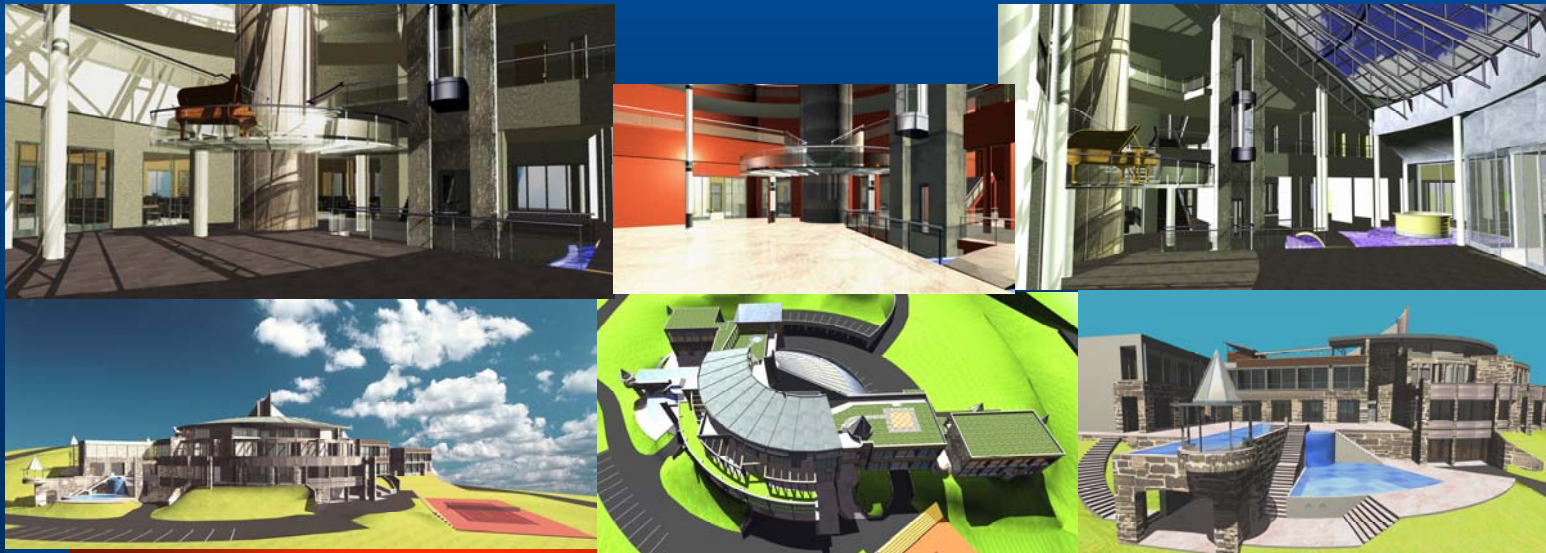
Situated on a hill, overlooking the site of The Collection Experience Malibu-North and the ocean to the lights of the greater Los Angeles Area in the middle of the planned development, near the future Corporate Management Center (CMC), reachable via Deer Creek Canyon road.



# THE COLLECTION EXPERIENCE

## MALIBU- NORTH / LA, CALIFORNIA

- supporting Facilities like water treatment plant, sewage plants, Water desalination plant and man-made lakes/ reservoirs, surface and structured parkings, harbors of refuge, sheltered water habitats, beach preservation and restauration, open space preserve, parks, landscaping, streets improvement and stabilization, bridges, circulation roads and pathways and parking, cable railway, private airfield with 1.350 m runway and heliport, gardens and parks.





# THE COLLECTION EXPERIENCE

## MALIBU- NORTH / LA, CALIFORNIA

- an independent and privately-owned energy station, water desalination and sewage plants, to supply power and water for the projects through “*AMES Alternative Modular Energy System*“ a proprietary, state-of-the-art technology for clean, efficient, low cost energy production and additional power generation that combines bio-technological carbonisation and gazification of all kind of organic material, waste, biomass and electricity generation operations in a synergistic energy processing and production facility as well as an integrated Modular Water Desalination Plant (MWDP) to produce the demand for drinking water (using seawater) for the entire THE COLLECTION EXPERIENCE MALIBU-NORTH project. The use of sewage mud, a byproduct of the Modular Sewage Plant (MSP), as organic raw material for the IMBCP to procure additional power is also envisaged.

# THE COLLECTION EXPERIENCE

## MALIBU- NORTH / LA, CALIFORNIA

*Additional, AMES is also studying the feasibility of setting up additional Alternative Modular Energy System (AMES) plants and other supporting facilities within the existing factory, to provide further energy and power processing from existing large quantities of local Municipal solid wastes, agricultural wastes and Biomass. This development will generate further value-added imports and exports for AEMS, in the future, as well as meeting all the demands of the local authorities.*

**For further informations...**

**Armin Kind (acalpha@bluewin.ch)**

**Rainer M. Berger (rainer.m.berger@bluewin.ch)**

# THE COLLECTION EXPERIENCE

## MALIBU- NORTH / LA, CALIFORNIA

Through AMES, The Collection Experience Project Malibu-North will be unique:  
it will be the 1<sup>st</sup> project in the world to independently produce its own  
power, water needs and waste management system, as well as its own raw material  
supplies to produce this energy.

